

NEW YORK

SPACES

THE HOME DESIGN MAGAZINE OF METROPOLITAN NEW YORK

ICONIC STYLE:

CENTRAL PARK WEST VIEWS

MADISON SQUARE LOFT

PARK AVE TOWER

WESTCHESTER CLASSIC



TOP 50 DESIGNERS

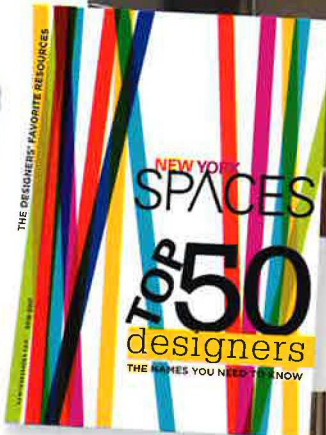
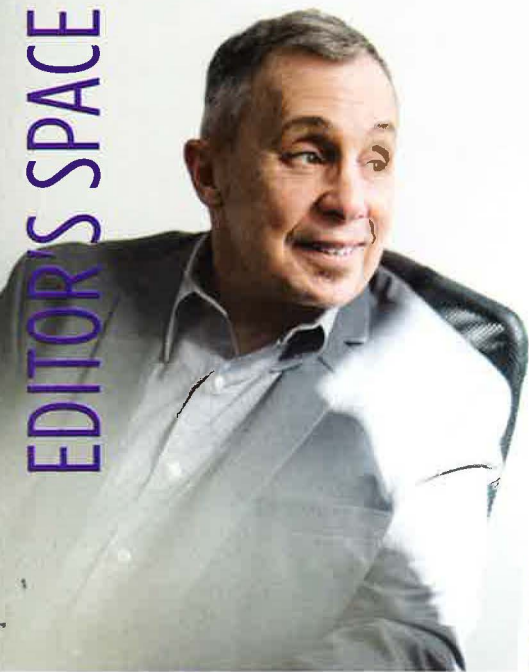
NEWYORKSPACES.COM

\$6.99US

09>



0 73361 08940 3



HIGH STYLE TOP TO BOTTOM: An architectural gem on the Upper West Side looks out over Central Park, and an Italian masterpiece has an Upper East perspective on the same treetops. Kelly Wearstler goes full fashion in the New York Design Center; Kelly Hoppen's plush plum armchair is deluxe.

I'M ALWAYS sorry to see summer go, but it's time to fall in love with New York City all over again. This is the season when fashion and design kick into high gear! At FIT, take in the dresses and accessories belonging to Marcel Proust's muse and 19th-century fashion icon Countess Greffulhe—fabulous in any century. Looking for Modern Love? David Bowie's art collection will be exhibited here before being auctioned by Sotheby's London in November. His reach extended from music and fashion to art and design.

We spend all year curating, editing, and debating, to present the top influencers in our design world. Perhaps you will agree with our choices and possibly you won't. But I'm sure we can all agree that personal style continues to intrigue and delight. We know our readers love design as much as we do, and we love hearing from you. Who knows where we will find the next design icon in the making!

Fall is a perfect time to visit Kelly Wearstler's new showroom in the New York Design Center, and our lineup of homes includes a Park Avenue apartment filled with sexy Italian brio, and a loft-like gem on the Upper West Side.

And finally, we celebrate the life of iconic fashion photographer Bill Cunningham. The corner of 57th and 5th is "Bill Cunningham Corner," and we will forever see him there, capturing real New York style.

Jason Kontos

Jason Kontos
Editorial Director

PS: A rousing cheer for our publisher, Lisa Ben-Isvy, who was nominated in the Entrepreneur category at the Folio: Top Women in Media awards. Congratulations, Lisa!

FOR THE LATEST NEWS AND DESIGN INFORMATION FROM NEW YORK SPACES:
ONLINE: newyorkspaces.com • INSTAGRAM: [nyspacesmag](https://www.instagram.com/nyspacesmag)
FACEBOOK: [facebook.com/newyorkspacesmagazine](https://www.facebook.com/newyorkspacesmagazine) • TWITTER: [@nyspacesmag](https://twitter.com/nyspacesmag) • PINTEREST: [nyspacesmag](https://www.pinterest.com/nyspacesmag)





BELLA NATURA

ITALIAN ARCHITECT AND DESIGNER
ACHILLE SALVAGNI IMBUES A LONG ISLAND
COUPLE'S PIED-À-TERRE WITH NATURAL
FORMS AND A LUXURIOUS SHIMMER

ARCHITECTURE AND INTERIOR DESIGN ACHILLE SALVAGNI
TEXT DEBORAH L. MARTIN
PHOTOGRAPHY PAOLO PETRIGNANI

PARKS DEPARTMENT The view of Central Park takes center stage, accented by red leather lounge chairs by Jacques Adnet (1950), and an ebony games table. On the FontanaArte side table, a Nemo table lamp from the Achille Salvagni Atelier collection, in onyx and bronze.





CHIC CHAMBERS ABOVE: The silk, hand-knotted rug designed by Salvagni and crafted in Tibet adds structure, and is flanked by a Hobbit console in bronze and glass and Tomaso Buzzi side chairs with parchment legs and velvet upholstery. The peacock wall sconce by Herve Van der Straeten is from Maison Gerard. OPPOSITE, TOP: The breakfast table was designed by Salvagni for the client and is surrounded by sculptural chairs by Jean Royère. The Artic Pear chandelier from Ochre hovers above. OPPOSITE, BOTTOM: A cabinet by Salvagni is inspired by the Roman Colosseum.



WHEN A LONG ISLAND COUPLE wanted a pied-à-terre in the city they turned to Italian architect and designer Achille Salvagni. This was his first full project in the United States, and to it he brought a distinctly European flair. “I started my career in Rome, but I also worked in Sweden and was influenced by the organic design and natural shapes used by people like Alvar Aalto.” Salvagni continues, “Using natural shapes is really in my DNA.” The roughly 1,500-square-foot apartment is on Fifth Avenue facing Central Park. “The amazing view is really the trophy here, it truly exemplifies the adage: location, location, location.” Salvagni adds, “It was important to echo the natural beauty outside, with beautiful textures and shapes inside.”

CONTINUED ►



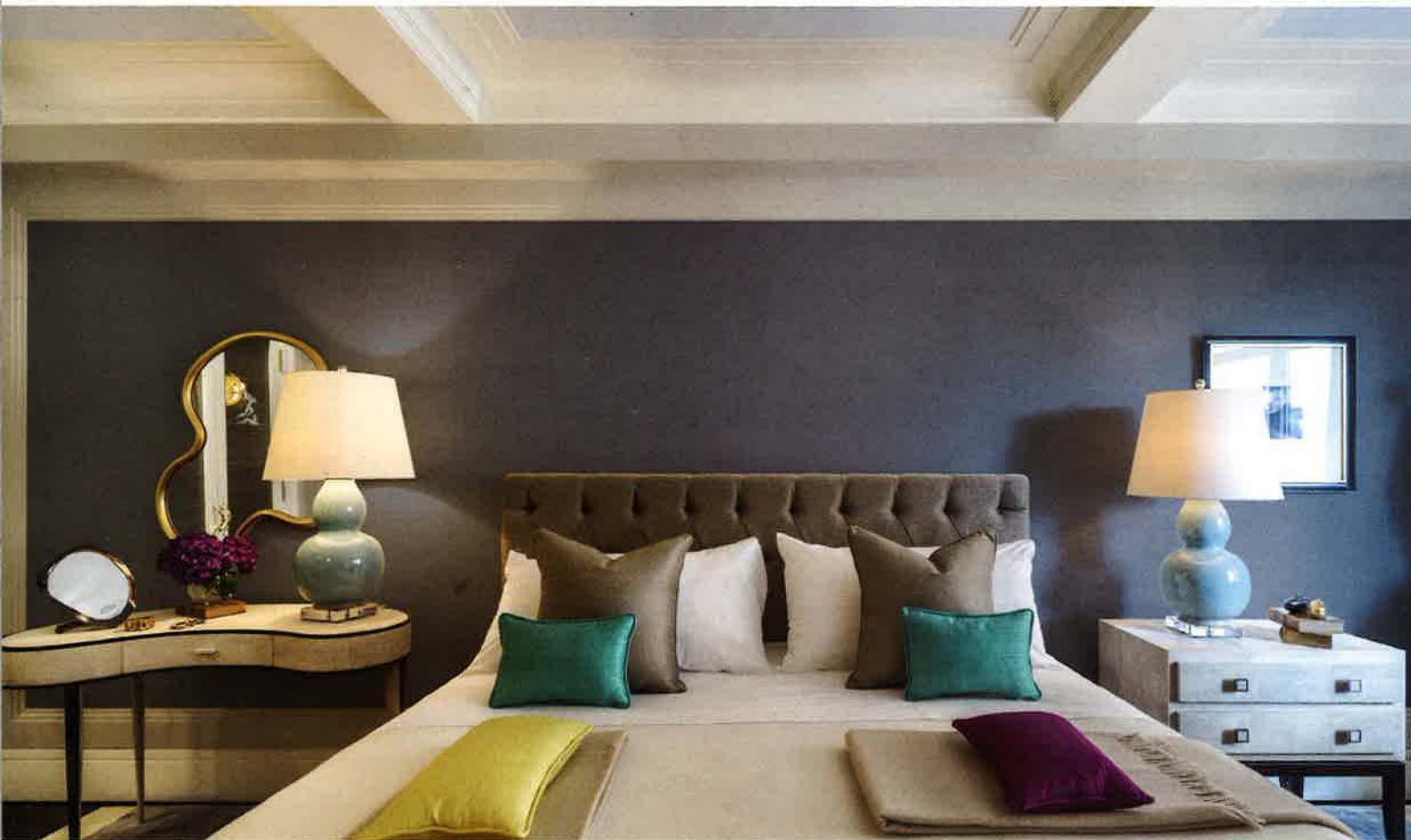
ENTRARE ABOVE: The living room flows into the dining area to the left and the foyer to the right. Gio cabinet from the Achille Salvagni Atelier collection rests under an undulating Venetian-style verre églomisé mirror, created by artist Miriam Ellner. It reflects a pop of red from a painting by Lucio Fontana, *Concetto Spaziale* (1954), that is a focal point in the room. Side chairs circa 1925 by Tomaso Buzzi are covered in velvet.



The architectural layout of the apartment, which Salvagni created, has three main destinations accessible from a main foyer area. "I created balance in the living room, between the entrance to the kitchen on the left and the foyer on the right, and I framed the connections between all the spaces with dark lines." The three main areas flow organically: The "night" area includes the master bedroom, bath, and closet; the living area connects to a den that can be used as a guest bedroom; and

the kitchen and dining area is an open room that allows the view to take center stage.

The furnishings and color scheme create a relaxing environment, one that echoes the chicness and attitudes of the clients. "The lady of the house dresses in a calming and soft palette, with a dash of vibrant color in a scarf, shoes, or clutch. I did the same in the design details such as the persimmon pillows in the living room, pops of red in artworks, and the colors of the linens in *CONTINUED* ▶





LIVING ART *OPPOSITE, TOP:* The classical entryway has a modern twist, with the designer's Ovo cabinet and Lucy mirror. The Barovier&Toso chandelier is from 1920. *OPPOSITE, BOTTOM:* The master bedroom echoes a Mondrian painting with blocks of color in Fanfara silks by Dedar. The Valentina desk was designed by Salvagni and named for his wife. *THIS PAGE, TOP AND BOTTOM:* The wall in the den is white oak with a textural finish. Salvagni designed the zebra pouf for the client. The verre églomisé mirrored panels by Miriam Ellner create elegant luminosity. A niche in the bathroom lined with zebrino marble and accents of black marble set into a bronze frame.



the bedroom." He adds, "The bed looks like a Mondrian." The lighting and accessories inspired his first collection for Maison Gerard. "I went to my Roman roots and hired the best craftsmen and stone workers. I took materials inspired by heritage and together with these artisans turned it into a new language for the future." Conical table lamps crafted of onyx and bronze with finials shaped like tree branches, mirrors that undulate with organic lines, lampshades that curve seductively, all create a dialogue with natural beauty of Central Park, just outside the windows.

SEE RESOURCES ■



STATEMENTS (Pages 41-42): **SA Baxter**, sabaxter.com. **Fendi Casa**, luxurylivinggroup.com. **DShop**, shop.thedpages.com. **Kelly Hoppen at Resource Decor**, resourcedecor.com. **Sandra Jordan Prima Alpaca**, sandrajordan.com. **Flexform**, flexformny.com. **AKDO**, akdo.com. **Phoenix Gallery**, phoenixgalleryny.com. **Designers Guild (T)**, designersguild.com. **STUDIUM**, studiumnyc.com. **Resource Furniture (T)**, resourcefurniture.com. **ANNA New York by RabLabs**, annanewyork.com. **Biassi Catani**, blasicatani.com. **B&B Italia**, bebitalia.com.

SHOWROOM STYLE (Page 50): **Kelly Wearstler (T)**, 200 Lexington Ave., Suite 816, NYC 10016; 212.679.4341; kellywearstler.com.



NEIGHBORHOOD (Pages 64-66): **Ferncliff Forest**, ferncliffforest.org. **Delamater Inn**, beekmandelamaterinn.com. **The Church of the Good Shepherd**, gsrhinebeck.com. **Hundred Mile**, 6738 Mill St., Rhinebeck, NY 12572; 845.516.4522; 100mileny.com. **Terrapin**, 6426 Montgomery St., Rhinebeck, NY 12572; 845.876.3330; terrapinrestaurant.com. **The Beekman Arms**, 6387 Mill St., Rhinebeck, NY 12572; 845.876.7077; beekmandelamaterinn.com. **Aroi Thai Restaurant**,

55 E. Market St., Rhinebeck, NY 12572; 845.876.1114; aroirestaurant.com. **Cinnamon Indian Restaurant**, 51 Market St., Rhinebeck, NY 12572; 845.876.7510; cinnamoncuisine.com. **Osaka**, 22 Garden St., Rhinebeck, NY 12572; 845.876.7338; osakasushi.net. **Le Petit Bistro**, 8 E. Market St., Rhinebeck, NY 12572; 845.876.7400; lepetitbistro.com. **Pizzeria Posto**, 43 E. Market St., Rhinebeck, NY 12572; 845.876.3500. **Gigi's Trattoria**, 6422 Montgomery St., Rhinebeck, NY 12572; 845.876.1007; gigihudsonvalley.com. **Bread Alone**, 45 E. Market St., Rhinebeck, NY 12572; 845.876.3108; breadalone.com. **Grand Cru Beer & Cheese Market**, 6384 Mill St., Rhinebeck, NY 12572; 845.876.6992; grandcruhinebeck.com. **Krause's Chocolates**, 6423 Montgomery St., Suite 9, Rhinebeck, NY 12572; 845.876.3909; krauseschocolates.com. **Oliver Kita**, 18 W. Market St., Rhinebeck, NY 12572; 845.876.2665; oliverkita.com. **Samuel's Sweet Shop**, 42 E. Market St., Rhinebeck, NY 12572; 845.876.5312; samuelssweetshop.com. **Hudson Valley Pottery**, 18 Garden St., Rhinebeck, NY 12572; 845.876.3190; hudsonvalleypottery.com. **Betsy Jacaruso**, The Rhinebeck Courtyard, 43-2 E. Market St., Rhinebeck, NY 12572; 845.516.4435; betsyjacarusoartist.com. **Upstate Films**, 6415 Montgomery St., Rhinebeck, NY 12572; 845.876.2515; upstatefilms.org. **Antique Market**, 24 W. Market St., Rhinebeck, NY 12572. **Hammertown**, 6420 Montgomery St., Rhinebeck, NY 12572; 845.876.1450; hammertown.com. **Oblong Books & Music**, 6422 Montgomery St., Rhinebeck, NY 12572; 845.876.0500; oblongbooks.com. **Sawkille**, 31 W. Market St., Rhinebeck, NY 12572; 845.876.2228; sawkille.com. **Hudson Valley Wine & Food Fest**, hudsonvalleywinefest.com. **Wilderstein Historic Site**, 330 Morton Road, Rhinebeck, NY 12572; 845.876.4818; wilderstein.org.

SHOP (Pages 72): **Tresserra**, 53 E. 58th St., NYC 10022; 212.644.1600; tresserra.com.

BELLA NATURA (Pages 92-99): Architecture and interior design: **Achille Salvagni Architeti**, salvagniarchiteti.net. **Achille Salvagni Collection**, achillesalvagni.com. Paint throughout is by **Farrow & Ball**, us.farrow-ball.com. (pages 92-93) Silk rug designed by **Achille Salvagni**. Side table by

FontanaArte, fontanaarte.com. Nemo table lamp from the **Achille Salvagni Atelier Collection**, achillesalvagni.com. Red leather Jacques Adnet chairs from **Maison Gerard**, 53 E. 10th St., NYC 10003; maisongerard.com. (pages 94-95) Silk rug and Hobbit console designed by **Achille Salvagni**. **P.C. Richard & Son**, pcrichard.com. Candlestick holders by **Herve Van der Straeten**. Nemo table lamps and Gio cabinet from **Achille Salvagni Atelier Collection**. Edition of six chairs by **Tomaso Buzzi**. Wall sconce by Herve Van der Straeten from **Maison Gerard**, maisongerard.com. Side tables by **FontanaArte**, fontanaarte.com. Breakfast table designed by **Achille Salvagni**. Oak and velvet chairs by **Jean Royère**. Arctic Pear chandelier from **Ochre**, ochre.net. Cupboard designed by **Achille Salvagni**. Chair is by Jules Leleu from **Maison Gerard**, maisongerard.com. (pages 96-97) Silk rug designed by **Achille Salvagni**. Gio cabinet from **Achille Salvagni Atelier Collection**. Verre eglomisé mirror created by **Miriam Ellner**, miriamellner.com. (pages 98-99) Silk rug and Ovo cabinet designed by **Achille Salvagni**. Lucy mirror from the **Achille Salvagni Atelier Collection**. Chandelier from **Barovier&Toso**, barovier.com. Valentina desk, silk rug, upholstered bed, and wall mirror all designed by **Achille Salvagni**. Devil table mirror from the **Aldus Collection**, aldusroma.com. Framed photo by **Mapplethorpe**. Cushions in the bed are lined in Fanfara silk by **Dedar (T)**. Silk wallcovering also by **Dedar at Jerry Pair Associates (T)**, 979 Third Ave., Suite 502, NYC 10022; 212.546.9001; jerrypair.com. Silk rug and Zebra pouf designed by **Achille Salvagni**. Doors inlaid with verre eglomisé by **Miriam Ellner**, miriamellner.com. Photo on the wall by **Massimo Listri**, massimolistri.com. Bathroom: Designed by **Achille Salvagni**. Wings candleholder from **Aldus Collection**, aldusroma.com.

WEST SIDE JUMP (Pages 100-105): Interior Design: **Kathryn Scott Design Studio**, 126 Pierrepont St., Brooklyn, NY 11201; 718.935.0425; info@kathrynsconfig.com; kathrynsconfig.com. Architecture: **David Foley of Foley Fiore Architecture**, 316 Cambridge St., Cambridge, MA 02141; 617.547.8002; info@foleyfiore.com; foleyfiore.com. (pages 100-101) **CONTINUED** ▶

