

# INTERIOR DESIGN<sup>®</sup>

MAY 31  
2018

*curve-a-licious*  
spring market tabloid



## 'round the bend

Look out: curves ahead!



1. Cozy Cuddle chair with polyester-upholstered seat and cushions by Structube. [structube.com](http://structube.com)
2. Tina Nicole's Cruise chair with Tobacco haze-stained alder base and Ultrasuede Sunset upholstery by Nathan Anthony Furniture. [nafurniture.com](http://nafurniture.com)
3. Papillia chair in bronze with tufted velvet upholstery by Achille Salvagni Architetti through Maison Gerard. [maison Gerard.com](http://maison Gerard.com)
4. Lono Open armchair in textile, felt, foam rubber, and sintepon by Faina. [faina.design](http://faina.design)
5. Roberto Lazzeroni's Tanya Low chairs in gloss-lacquered cast aluminum with fabric or leather seats by Visionnaire. [visionnaire-home.com](http://visionnaire-home.com)
6. Paolo Lucidi and Luca Pevere's Paipaï sofa with mechanically soldered steel structure and technical fabric upholstery over foam by Ligne Roset. [ligne-roset.com](http://ligne-roset.com)
7. Amalfi upholstered ottoman with solid brass legs by Julian Chichester. [us.julianchichester.com](http://us.julianchichester.com)
8. Donato chair in solid walnut with linen-cotton upholstery and powder-coated cold-rolled steel base by Bellini Modern Living. [bellinimodernliving.com](http://bellinimodernliving.com)
9. Lucie Koldová's Chips lounge chair in beech with mesh back by Ton. [ton.eu](http://ton.eu)
10. Ruder Novak-Mikulic and Marija Ruzic's Mela chair in walnut with fabric or leather upholstery by Artisan through Stillfried Wien. [stillfried.com](http://stillfried.com) ➔

seating



1 2  
4 3

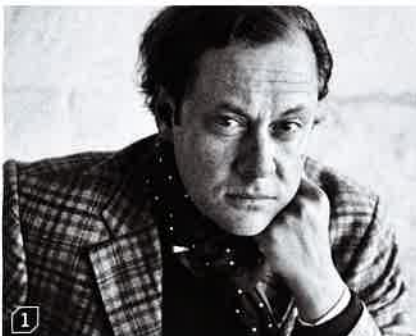


**Jonas Lindvall**  
for **Stolab**

**Thomas Pheasant**  
of **Thomas Pheasant**

**Alberto Brogliato and Federico Traverso**  
for **Cappellini**

**Adriana Hoyos**  
of **Adriana Hoyos Furnishings**



**product** Miss Holly Klädd  
**standout** Right at home around a dining or conference table, this new version of the popular Miss Holly chair retains the original solid oak legs while adding the option for comfortable upholstery. [stolab.se/en](http://stolab.se/en)

**product** Origami  
**standout** Sharp, crimped shapes on the sculptural lounge chair's cast-bronze base are reminiscent of the Japanese paper folding technique. Through Maison Gerard. [maisongerard.com](http://maisongerard.com)

**product** Newwood  
**standout** Stackable all-wood chairs—a first for the manufacturer—come in two versions, one with a spoked back, the other with wide-open space below the slim backrest. [cappellini.it](http://cappellini.it)

**product** Rumba Crescent  
**standout** The dance for which the sofa is named has a delicate rhythm—as does its wraparound back and curved wooden base, accented by polished brass or silver studs. [adrianahoyos.com](http://adrianahoyos.com)



1

art smart



2

3



8

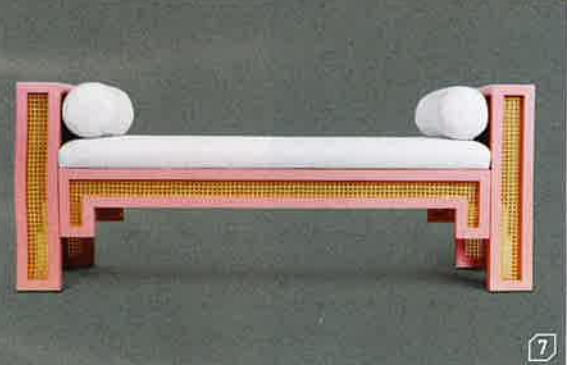
Statement makers with a sculptural bearing

9



4

10



7

6



1. Paola Navone's Carve 07 armchair in mahogany by Gervasoni. [gervasoni1882.com](http://gervasoni1882.com)
2. Manet Easy chair in polyester, medium-density fiberboard, and vinyl by Best Before 2065. [maneteasychair.com](http://maneteasychair.com)
3. Valmadrera pouf with reversible jacquard-fabric cover by MissoniHome. [missionihome.com](http://missionihome.com)
4. Arturo Rojas Cardona's Tetratopoi seat in solid oak by ArchonDesign. [archondesign.com](http://archondesign.com)
5. Iota poufs in cotton and polyester with matte-black iron structure by Iota. [iotaproject.com](http://iotaproject.com)
6. Deborah Moss's TamTam stool in scagliola by Moss & Lam. [mossandlam.com](http://mossandlam.com)
7. Alexandra bench in natural cane, linen, and painted finish by Maggie Cruz Home. [maggiecruzhome.com](http://maggiecruzhome.com)
8. Orbital sofa in steel and bronze with leather upholstery by Harow Studio. [harow.fr](http://harow.fr)
9. Ayala Serfaty's Daura armchair in wool and felt by Maison Gerard. [maisongerard.com](http://maisongerard.com)
10. Tactile Monolith No. 2 unit in crushed granite composite by Stine Mikkelsen. [stinemikkelsen.com](http://stinemikkelsen.com) >

seating



5

DESIGN



5 6  
8 7



**Claudio Dondoli and Marco Pocci**  
for **HC28**

**Gianluca Pacchioni**  
of **Gianluca Pacchioni**

**Jeff and Beth Newell**  
of **Newell Design**

**Roland Zehetbauer and Jeff Behnke**  
of **Altura Furniture**



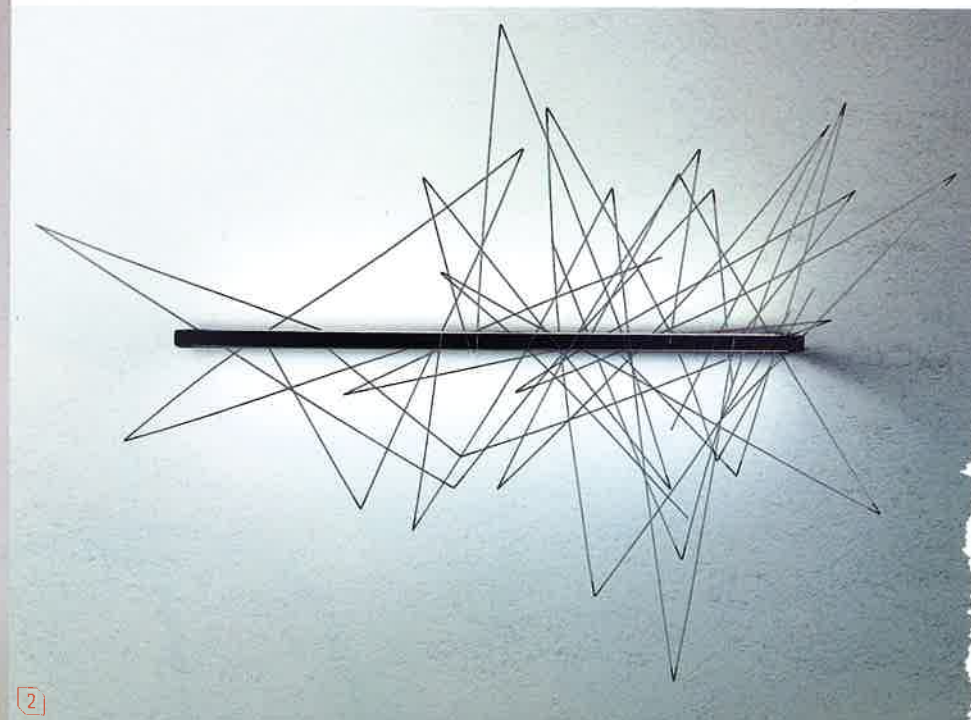
**product** Tube  
**standout** The partners behind Archirivolto Design offer up a coffee table with a supple leather sling bisecting marble and walnut planes—a neat contrast of hard and soft. [hc28furniture.com](http://hc28furniture.com)

**product** Cremino  
**standout** A narrow gueridon, just 15 inches wide, celebrates the perfectly imperfect via rough-hewn Persian red travertine topped with poured brass. Through Maison Gerard. [maisongerard.com](http://maisongerard.com)

**product** Mosaic  
**standout** Metal bands fracture shimmering, reflective selenite, forming asymmetric patterns that imbue the dresser with kinetic charge. [newelldesignstudio.com](http://newelldesignstudio.com)

**product** Astratto 84  
**standout** A 1960s building facade reminiscent of the winding flower beds of landscape designer Roberto Burle Marx sparked the walnut cabinet's CNC-routed relief. [alturafurniture.com](http://alturafurniture.com) >

BOTTOM, SECOND FROM LEFT, LORENZO PENNATI



**Achille Salvagni**  
of **Achille Salvagni Atelier**

**Kazuhiro Yamanaka**  
for **Pallucco**

**Toan Nguyen**  
for **Vibia**

**Sofia Lagerkvist and  
Charlotte von der Lancken**  
for **Zero**



**product** Bubbles  
**standout** Onyx globes joyfully mingle with 24-karat gold-plated bronze spheres in this LED sconce, produced in a limited edition of 20. [achillesalvagni.com](http://achillesalvagni.com)

**product** Graffiti  
**standout** Part kinetic sculpture, part light, the fixture's fully moveable stainless-steel sticks allow for playful expression by the user. Through DDC. [ddcnyc.com](http://ddcnyc.com)

**product** Algorithm  
**standout** Rendered in hand-blown glass with a steel canopy, a flexible lighting system with no set configuration enables specifiers to create whatever they desire: a flock of birds, a constellation, or raindrops falling from the sky. [vibia.com](http://vibia.com)

**product** Hoop  
**standout** Front offers a globular glass diffuser playfully ensnared in a painted aluminum cage, one spoke of which feeds electricity to the dimmable LED fixture. Through Global Lighting. [globallighting.com](http://globallighting.com)